

MODEL DM3-i, DRYING MONITOR



Model DM3-i

ASSURE PROPER DRYING; DEFECT-FREE PRODUCT & ENERGY SAVINGS

Conair extends the legacy of the patented Drying Monitor with the introduction of the DM3-i. Drying performance analysis occurs inside the drying hopper providing you with early detection of poor drying conditions and allowing you to correct potential issues before you have processed improperly dried material. With the DM3-i you will have control of polymer drying, make defect-free parts, save energy and increase your profitability.

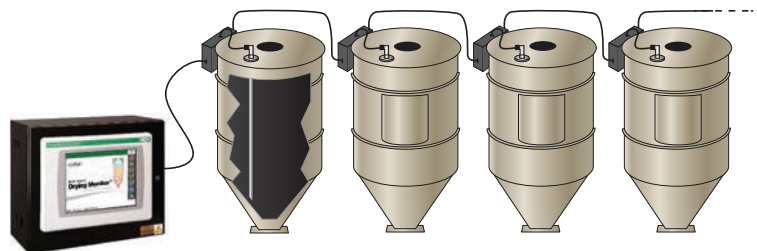
Now available as an independent touch panel, the DM3-i model can monitor up to 30 hoppers – even non-Conair hoppers. The DM3 is also available as a dryer option, embedded into the dryer control. Contact Conair for more information on the DM3-e.

MONITOR DRYING FROM WITHIN THE HOPPER

The Drying Monitor consists of a unique, six-zone, stainless steel temperature probe installed in the drying hopper that senses the specific temperature profile required for proper drying of your particular material. Interpretation of that temperature profile from the DM3-i monitor leads directly to predicting under or over-dried material, inadequate air flow, clogged filters, heater failure, excess throughput, unresponsive loading, over-capacity drying and many other conditions that are likely to produce scrap and waste time, energy and material. In addition, DM3-i provides information for hopper temperature trending, energy reduction and other data logging all in one display. It's web-enabled too, so you can get that information on the go.

The DM3-i temperature profiles are your visual assurance and recorded proof that your resins have been held at supplier's required drying temperatures for the required drying time. Trend data for all monitored hoppers is retrievable for up to seven days and may be exported directly to a spreadsheet of actual resin residence times and temperatures.

- **Don't waste time, energy or material**
 The DM3 monitors the temperature profile inside the drying hopper.
- **Early warnings, early detection of problems**
 Any out-of-spec temperature zone reading that may lead to incorrectly dried material is shown for immediate correction.
- **Fits any brand hopper**
 Any size hopper, of any brand may be easily fitted with a Drying Monitor Probe to report on the state of your drying process, at any time.



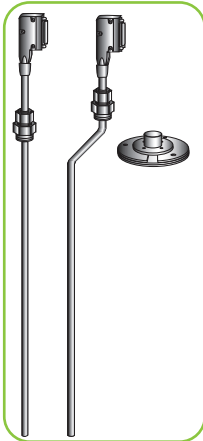
The model DM3-i can monitor up to 30 hoppers for proper drying performance.



MODEL DM3-i, DRYING MONITOR

FEATURES

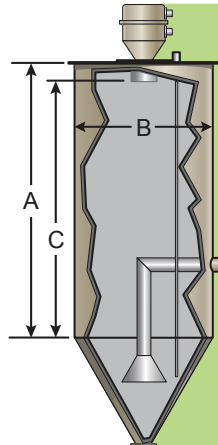
Equip your drying hoppers with Drying Monitor temperature probes



Hopper Probes

Unobtrusive, smooth, one piece, stainless steel Drying Monitor Probes are sized for each drying hopper so they can relay precise readings of six crucial temperature zones, in the drying hopper to the DM3-i TouchView Panel.

Hopper probes may be supplied straight, or angled to accommodate loading equipment. The exclusive adaptor plate allows for secure installation of the probe down from the top or up from the inside of the hopper.

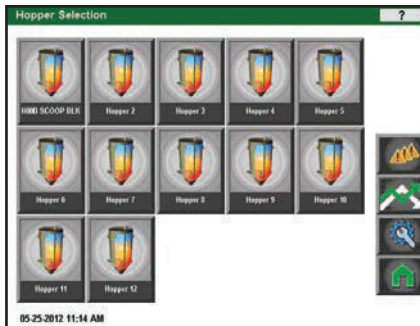


Required measurements for Drying Monitor Probe

For easy fitting of the Drying Monitor Probe into Conair hoppers, simply provide the model number and serial number of the hopper. Other hoppers can be fitted by measuring the critical dimensions as shown below and then supplying the measurements and engineering drawing to Conair.

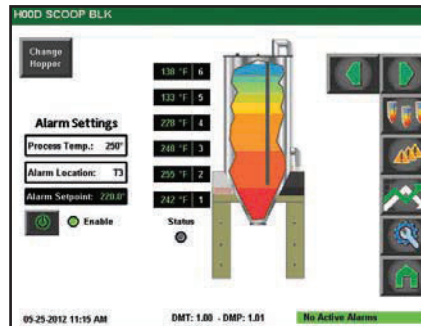
- A = Straight section height
- B = Hopper inside diameter
- C = Straight section from loader discharge

HOPPERS AT A GLANCE



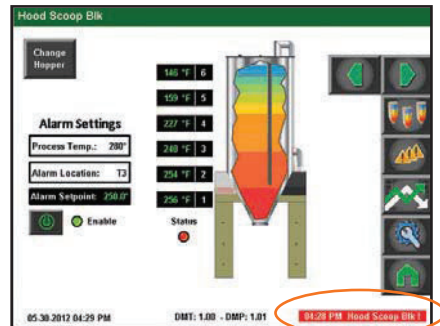
- Up to 30 hoppers are displayed and easily accessed for review or changing settings on the graphical touch screen interface panel.

YOUR DRYING HOPPER IN DETAIL



- Each hopper being monitored by DM3-i will display its critical drying temperature profile for examination and trending, and most importantly, assuring proper drying is taking place.

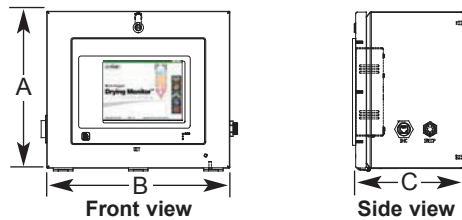
ADVANCED WARNING



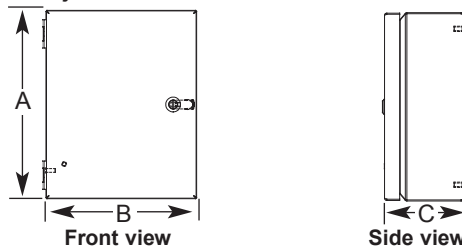
- When temperatures are not what they should be, Drying Monitor will be first to let you know with a flashing alarm banner and listing the alarm by date and time in the alarm log.

SPECIFICATIONS

Monitor panel



Probe junction box



MODEL	DM3-i	
	DM3-i monitor panel	DM3-i probe junction box
Control box type	DM3-i monitor panel	DM3-i probe junction box
Dimensions inches {mm}		
A- Height	13.0 {330}	10.0 {254}
B- Width	14.0 {355}	8.0 {203}
C- Depth	8.0 {203}	4.0 {101}
Weight lb {kg}		
Installed	29 {13}	29 {13}
Shipping	36 {16}	36 {16}

SPECIFICATION NOTES

Specifications may change without notice. Check with a Conair representative for the most current information.

The DM3 is also available as a dryer option, embedded into the dryer control. Contact Conair for more information on the DM3-e.

