

TRUEBLEND™ TB900-4 AND TB900-6



Model TB900-6
Shown with optional
Access Loaders/Receivers

ACCURATE GRAVIMETRIC BLENDING FOR HIGHER THROUGHPUTS

Get accurate blends, better mixing, faster material changes and increased profits with Conair's TrueBlend Series Blenders. Steep-sided component hoppers allow material to flow evenly and freely through vertical dispense valves into the weigh chamber. Efficient mixing assures full integration of all recipe ingredients. The fully enclosed cabinet design assures no pellet spillage and clean operation. Standard convenient features such as wide access doors on each main material compartment, a hinged access door and removable components in the mixing chamber reduce downtime during cleanout.

THROUGHPUT RATES TO 3500 POUNDS AN HOUR

The TrueBlend TB900 series blenders offer processors with medium-to-large extruders or large tonnage injection molding machines a superior way to blend color and additives centrally or at the throat of the processing machine.

The blender dispenses up to six materials (depending on model) from material compartments into a common weigh chamber. The control determines the correct weight of each ingredient based on setpoints entered on the touch screen display. Up to 1000 recipes and 250 resin names can be entered and stored in the processor.

Unique fast-acting "no stick" vertical valves control the amount of material dispensed. All dispense valves use two-way air cylinders assuring positive operation.

Choose between four component or six component blender models. Options include an integrated blender/loader control feature, a flow control valve for central blending applications and material compartment drain ports.

■ Blend accuracy to 1/2 of 1%

Colorant and/or additive weights are held to within 0.5% of setting. A selectable Precision Additive™ feature is also available for additives. The microprocessor control automatically calibrates after every cycle and compensates for variations in dispense method, resin bulk density or particle geometry.

■ Easy-to-use control

Intuitive 5.7 inch LCD touch screen control with full color graphics allows quick and easy setup of blender setpoints. All setpoints are displayed simultaneously. Enter the percentages of the blend on the touch screen display and the blender does the rest. The system automatically weighs the recipe ingredients in the proper sequence and maintains the correct blend relationship. Any position can be identified as one of the four material type selections adding flexibility to your application setup.



■ Convenient, no-tools clean out

Easy access to all material contact points for fast and safe cleaning during color or resin changes. Material compartment access doors, removable weigh bin, mix agitator and mix chamber liner allow quick efficient cleaning. The blender features a built-in material shutoff valve below the mixing chamber, this can be replaced with the automatic flow control valve for remote and central blending applications.

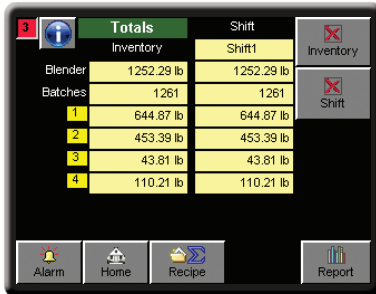


TRUEBLEND™ TB900-4 AND TB900-6

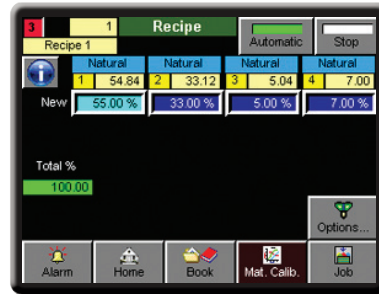
FEATURES

Intuitive, SB-2 touch screen control offers the industry's best multi-component accuracy

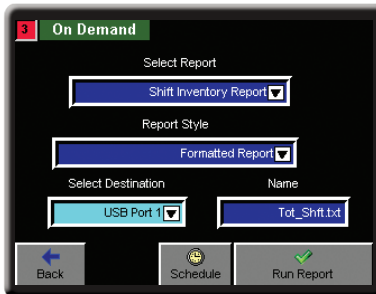
This easy-to-use touch screen control allows for fast setup of blender setpoints and automatically weighs recipe ingredients in the proper sequence to maintain correct blend relationship. Any position can be identified as one of the four material type selections adding flexibility to your application setup.



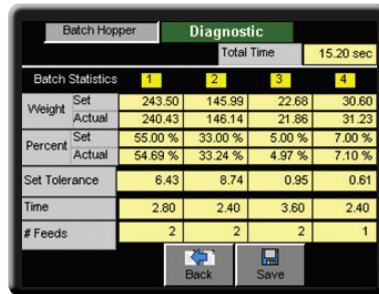
Instantly see your materials usage
Material usage / totals screen tracks the number of batches, weights dispensed by bin and weight dispensed in total since the last reset.



View and make changes to the active recipe
Save and recall up to 1000 recipes and 250 resin names in the Recipe Book.



Built-in reporting
Every SB-2 blender control is equipped with the capability to help users track their settings, alarms, material consumption, shift and inventory needs.



On-call diagnostics
Diagnostic screen displays target set point percentage and actual percentage dispensed. Also displays start and finish weights for each material per batch. Verifies true and accurate blend performance.

WHICH PACKAGE IS RIGHT FOR YOU?

STANDARD PACKAGES - 4 Component	TS	TE	LS [†]	LE [‡]
FEATURES				
Material bin sight glasses and bin clean out doors	●	●	●	●
Touch screen control	●	●	●	●
Loading control option			●	●
Loader, pump and compressed air interconnection kit			●	●
Material bin finger guards	●		●	
Quick clean/enhanced flow option*		●		●
Machine mount with manual slide gate discharge [†]	●	●	●	●
Remote/bin mount with pneumatic slide gate discharge [†]	●	●	●	●

STANDARD PACKAGES - 6 Component	TS	TE	LS [†]	LE [‡]
FEATURES				
Material bin sight glasses and clean out doors	●	●	●	●
Touch screen control	●	●	●	●
Loading control option			●	●
Loader, pump and compressed air interconnection kit			●	●
Material bin finger guards	●		●	
Quick clean/enhanced flow option*		●		●
Machine mount with manual slide gate discharge [†]	●	●	●	●
Remote/bin mount with pneumatic slide gate discharge [†]	●	●	●	●



FEATURE NOTES:

* Material bin door safety interlocks and drain ports.

[†] Choose between either machine or remote mounted blender packages.

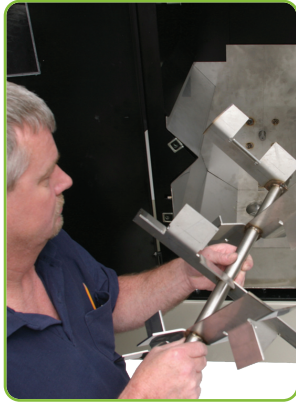
[‡] Includes an optional integrated loader control feature.

Specifications may change without notice. Consult with a Conair representative for the most current information.

TRUEBLEND™ TB900-4 AND TB900-6

FEATURES

Simple and quick cleanout



Easy access to all material contact points for fast and safe cleaning during color or resin changes. Material compartment access doors, removable weigh bin, mix agitator and mix chamber liner allow quick efficient cleaning.

Optional floor stand design

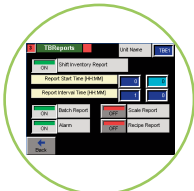


Blender installs easily to this floor stand, which is equipped with a material reservoir.

Each blender stand features:

- Sturdy design
- Easy cleanout
- Fork-lift provisions
- Drawer magnet provision
- One standard material takeaway tube (up to two additional material tubes are available as options)
- Available with two or five cubic foot reservoir capacities

OPTIONS

**TB reports**

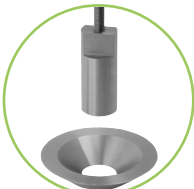
Used to track and document material usage, alarms, batch and shift reports and recipes. See *TrueBlend Reporting Software and ControlWorks specification sheets*.

**Material level alarm control**

Eliminate costly material shortage problems and machine downtime with this early warning system. The control monitors up to six material levels at one blender. Individual switches can be adjusted to monitor high or low material levels. See *Level Alarm Control specification sheet*.

**Drain chute**

The material drain chute readily installs to the chassis opening of the blender for fast and simple cleanout.

**Major component flow restrictor**

Available with TB/TBA/TBH models 100, 250, 500 and 900 on bin positions one and/or two. (Generally used when feeding more than two minor ingredients.)

**Minor component flow restrictor**

Available with TB/TBA/TBH models 100, 250, 500 and 900 on bin positions three and/or four. (Generally used when feeding 1% or less of an ingredient.)

**Air blow-off for mix chamber level sensor**

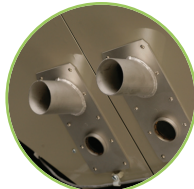
This feature is integrated into the blender mix chamber to blow excessive dust and fines away from the sensing device and ensure accurate level sensor reading.

**Remote mixer demand sensor**

This sensor provides a fill-to level option in a surge bin or other material receptacle that sits below a remote mounted blender.

**TrueBlend high-heat models**

Used to process high temperature plastics such as ABS, nylon, polycarbonate and PET resins. Available in medium temperature (160° - 250°F (71° - 121°C)) TBA models and high temperature (250° - 375°F (121° - 191°C)) TBH models. See *TBA and TBH specification sheet*.

**Dry air blanket**

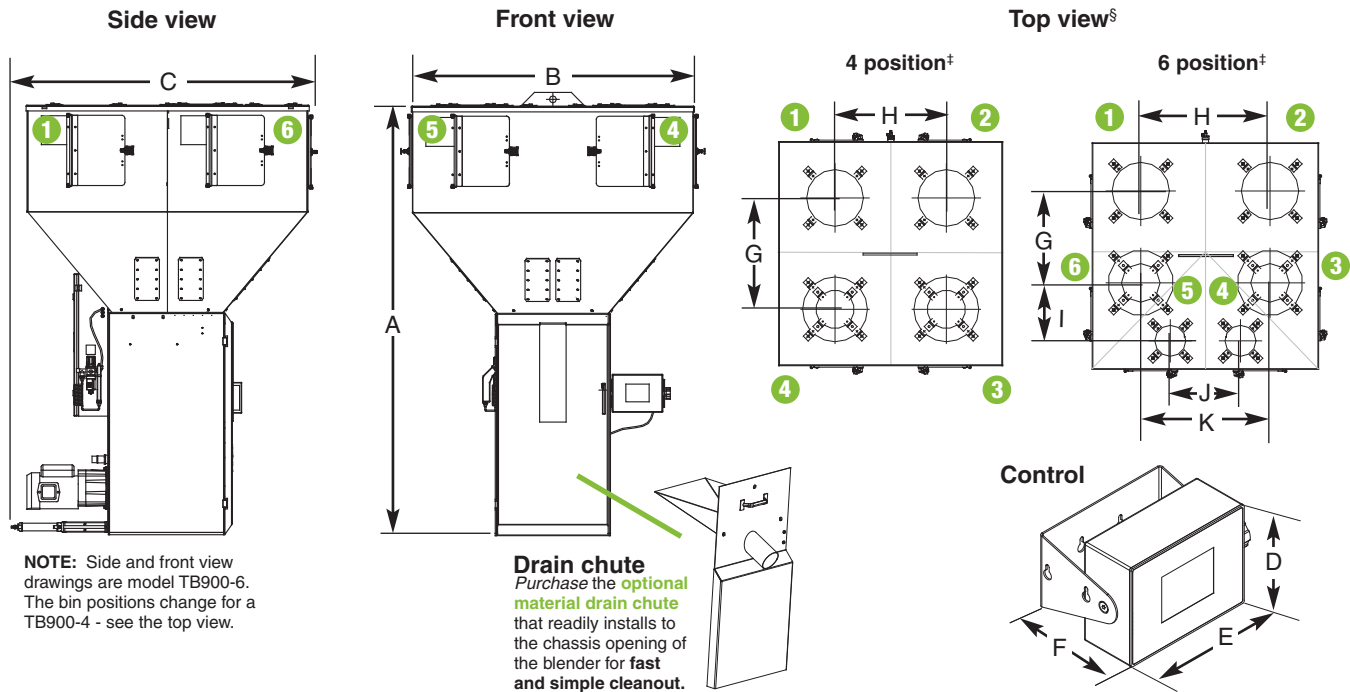
This option blankets the material compartments and mixing chamber with hot dry air to prevent moisture regain during processing. Available on both the TBA and TBH models. See *TBA and TBH specification sheet*.

**Remote HMI operator cable**

This option is for the 6 meter cable in lieu of the standard 2 meter cable.

SPECIFICATIONS

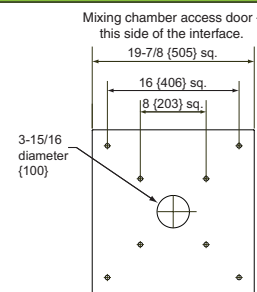
TRUEBLEND™ TB900-4 AND TB900-6



MODELS	TB900-4	TB900-6
Performance characteristics		
Batch size lb {g}	19.8 {9000}	19.8 {9000}
Maximum throughput rate lb/hr {kg/hr}*	3500 {1588}	2800 {1270}
Bin capacity - main ingredient ft³ {liter}	4.4 {124.6}	4.4 {124.6}
Bin capacity - minor ingredient ft³ {liter}	4.4 {124.6}	2.2 {62.3}
Maximum number of materials	4	6
Number of vertical discharge valves	4	6
Number/(size) of major bin valves	2 - (100 mm)	2 - (100 mm)
Number/(size) of minor bin valves	2 - (60 mm)	4 - (60 mm)
Dimensions inches {mm}		
A - Height above mounting plate†	74.75 {1896}	74.75 {1896}
B - Hopper width and depth (square)	48.00 {1219}	48.00 {1219}
C - Depth	51.00 {1296}	51.00 {1296}
D - Control height	6.50 {165.1}	6.50 {165.1}
E - Control width	8.75 {222.3}	8.75 {222.3}
F - Control depth	6.75 {171.5}	6.75 {171.5}
G - Loader center distance	24.00 {609.6}	24.00 {609.6}
H - Loader center distance	24.00 {609.6}	18.00 {457.2}
I - Loader center distance	NA	11.19 {284.2}
J - Loader center distance	NA	15.00 {381.0}
K - Loader center distance	NA	33.44 {849.3}
Weight lbs {kg}		
Installed	550 {249}	550 {249}
Shipping	700 {318}	700 {318}
Voltage total amps		
115V/1 phase/60 hz	6.3	6.3
230V/1 phase/50 hz	3.2	3.2
Compressed air requirements		
Discharge valves	90 psi @ 0.2 ft³/min {6 bars @ 0.09 liters/sec}; 1/4 in. NPT fitting	
Maximum loader sizes		
20 inch loaders - number of loaders	4	2
15 inch loaders - number of loaders	NA	2
8 inch loaders - number of loaders	NA	2

MOUNTING INTERFACE

Dimensions shown in inches and {mm}.



Mounting bolt hole size (8 holes) 9/16 inch {14.0 mm}.
Predrilled 8 x 8 and 16 X 16 mounting pattern as standard.

SPECIFICATION NOTES

* Maximum throughput rates are based on 35 lb/ft³ pelletized material, using all standard valve sizes. Use of reducer inserts will lower the rate shown.

Throughput rates are based on:

- **A 4-position blender recipe** of 20% regrind, 80% natural, 3% color and 2% additive material.
- **A 6-position blender recipe** of 20% regrind, 80% natural, 3% color at position 3, 2% additive at position 4, 3% additive at position 5 and 2% additive at position 6.

[†] The optional flow control valve will mount inside the chassis in the space of the manual slide valve. Conair recommends using the optional flow control valve when mounting the blender on a stand, surge bin or hopper.

[‡] TB900-4 hopper positions three and four are supplied with 12-8 adapters with eight inch cover plates as standard. TB900-6 hopper positions three and six are supplied with 12-8 adapters and eight inch cover plates as standard.

[§] Numbers in top view drawings represent hopper positions.

Specifications may change without notice. Consult with a Conair representative for the most current information.